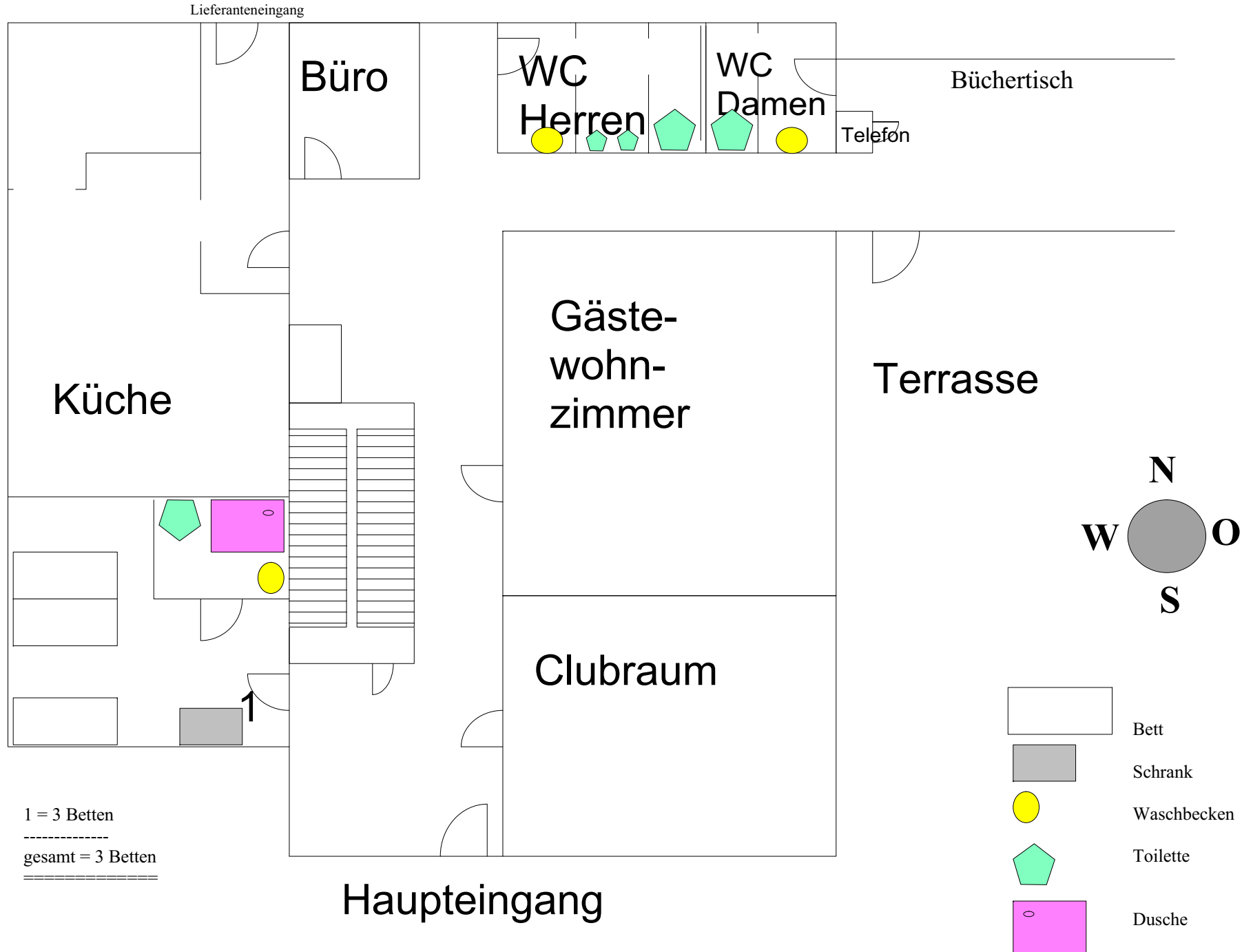
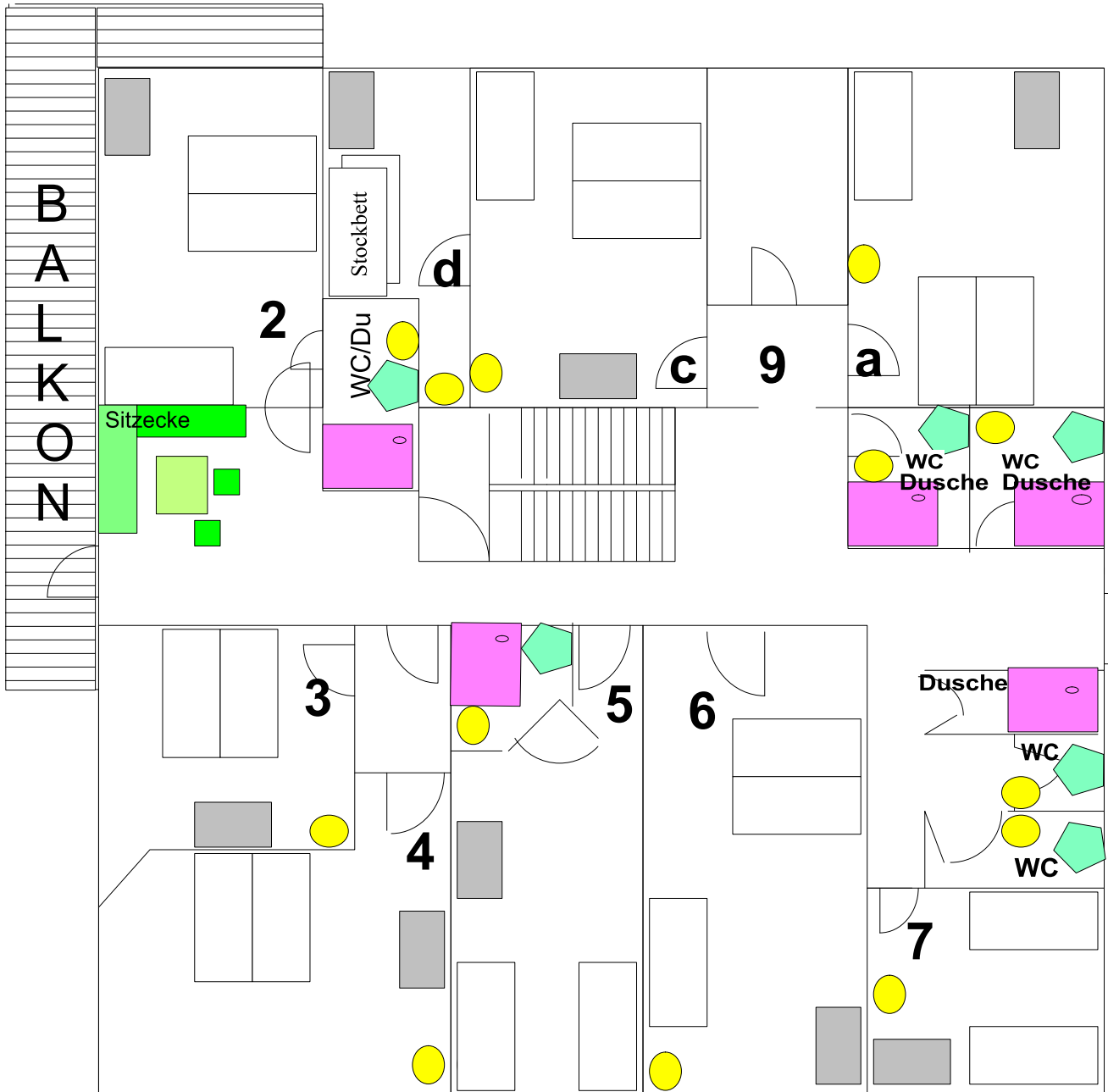


Forggensee

Altbau - EG

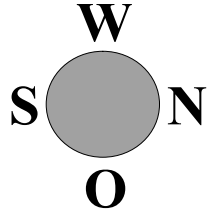




Forggensee

1.OG

Altbau



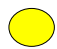




Fluchttür

- 2 = 3 Betten
- 3 = 2 Betten
- 4 = 2 Betten
- 5 = 2 Betten
- 6 = 3 Betten
- 7 = 2 Betten
- 9a = 3 Betten

- 9c = 3 Betten
- 9d = 2 Betten (1 Stockbett)

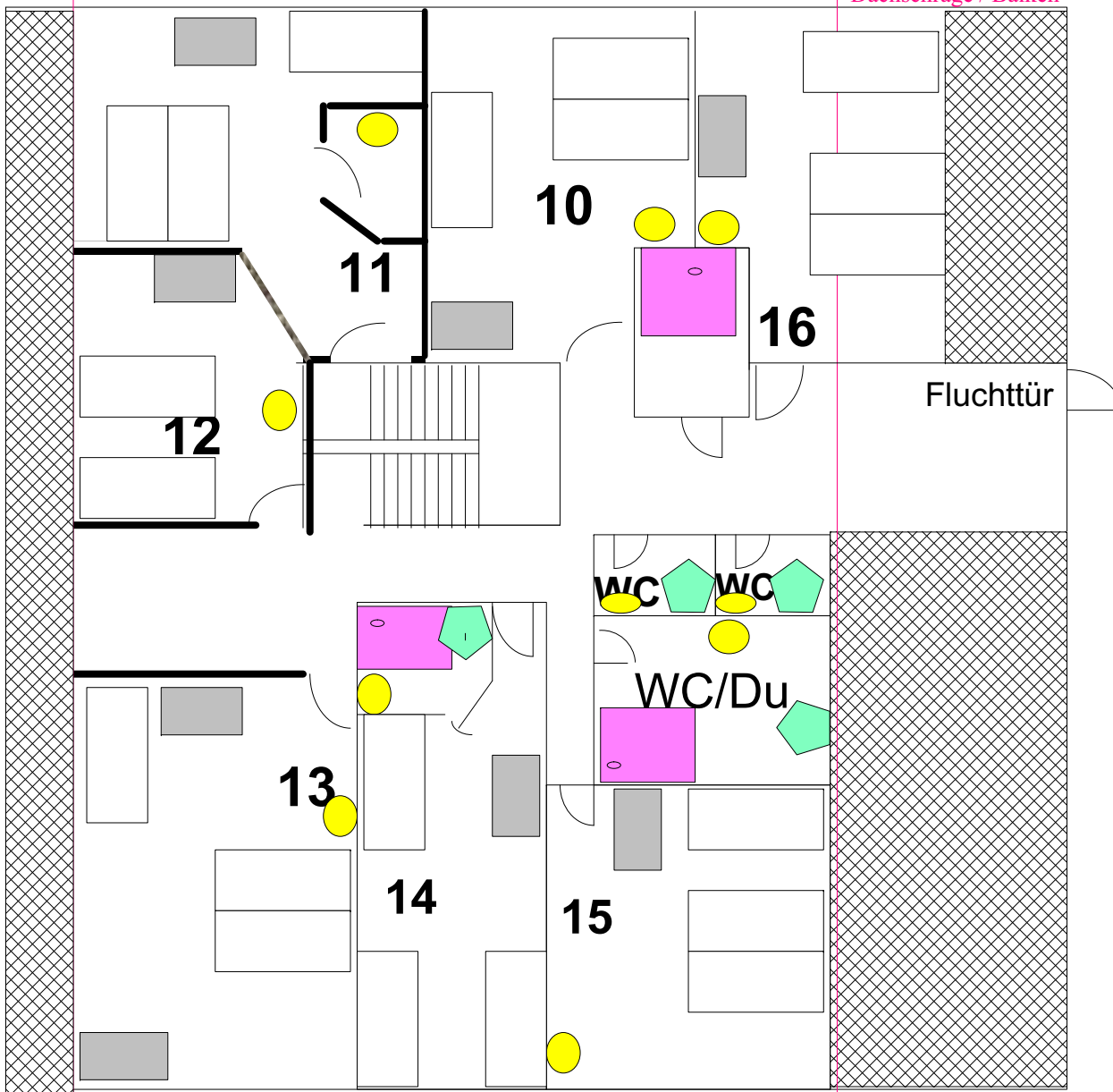
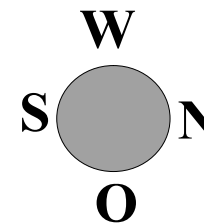
-
- gesamt = 22 Betten

-  Bett
-  Schrank
-  Waschbecken
-  Toilette
-  Dusche

Forggensee Altbau 2. OG

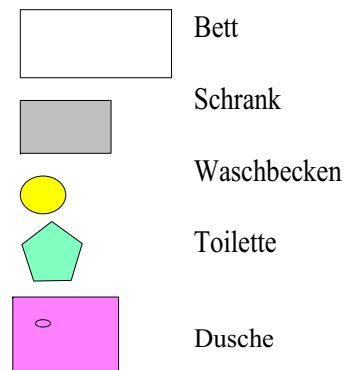
Dachschräge / Balken

Dachschräge / Balken



- 10 = 3 Betten
- 11 = 3 Betten
- 12 = 2 Betten
- 13 = 3 Betten
- 14 = 3 Betten
- 15 = 3 Betten
- 16 = 3 Betten

gesamt 20 Betten



Forggensee Neubau EG

NB 1.OG = 25 Betten
AB Erdg. = 3 Betten
AB 1.OG = 22 Betten
AB 2.OG = 20 Betten

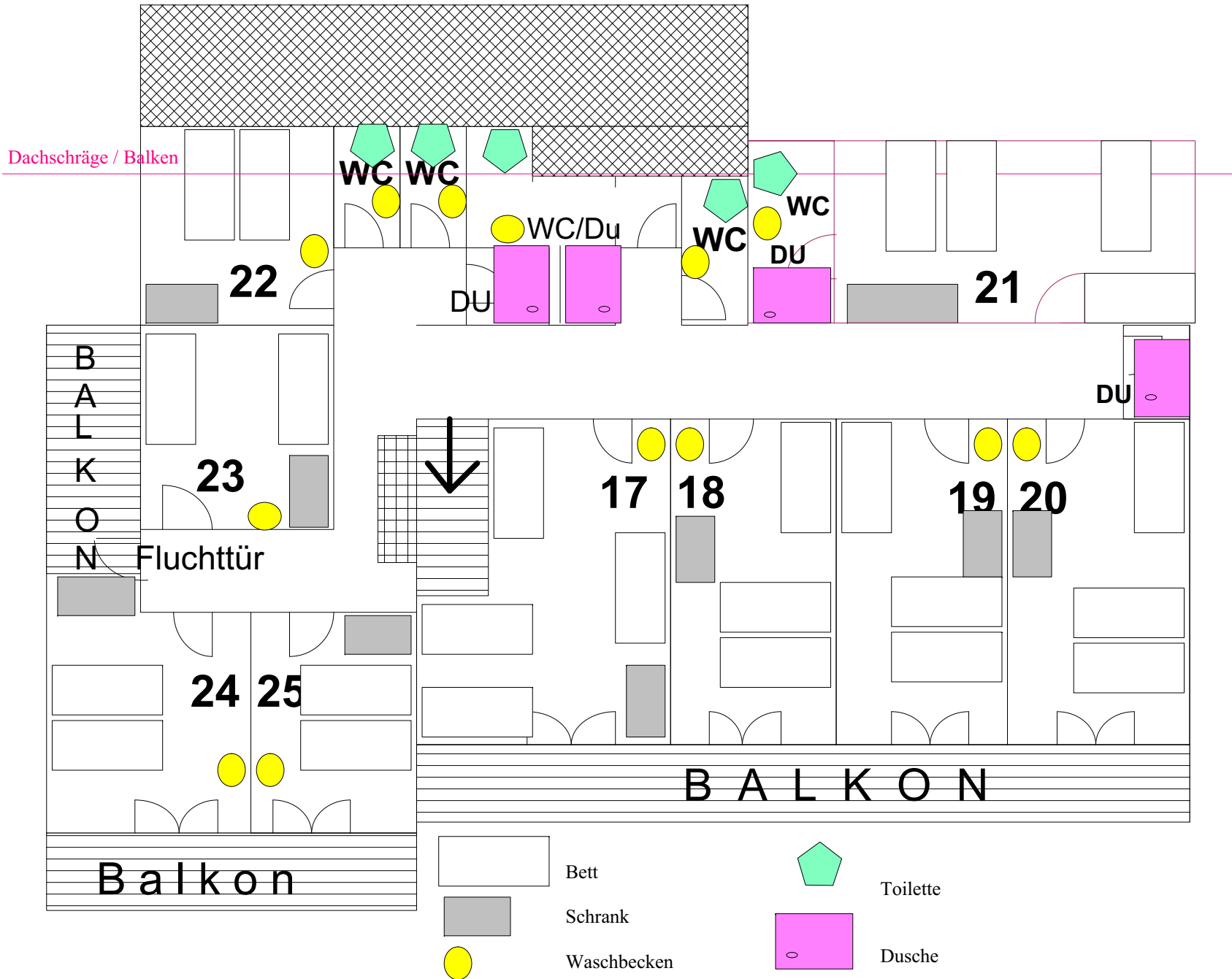
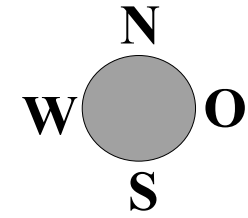
gesamt = 70 Betten
=====

Im Haus stehen einige Matrasen,
7 Kinderbetten und 7 Hochstühle bereit.



ca 1 : 100

Forggensee Neubau 1. OG



- 17 = 4 Betten
- 18 = 3 Betten
- 19 = 3 Betten
- 20 = 3 Betten
- 21 = 4 Betten
- 22 = 2 Betten
- 23 = 2 Betten
- 24 = 2 Betten
- 25 = 2 Betten
-
- gesamt = 25 Betten
- =====