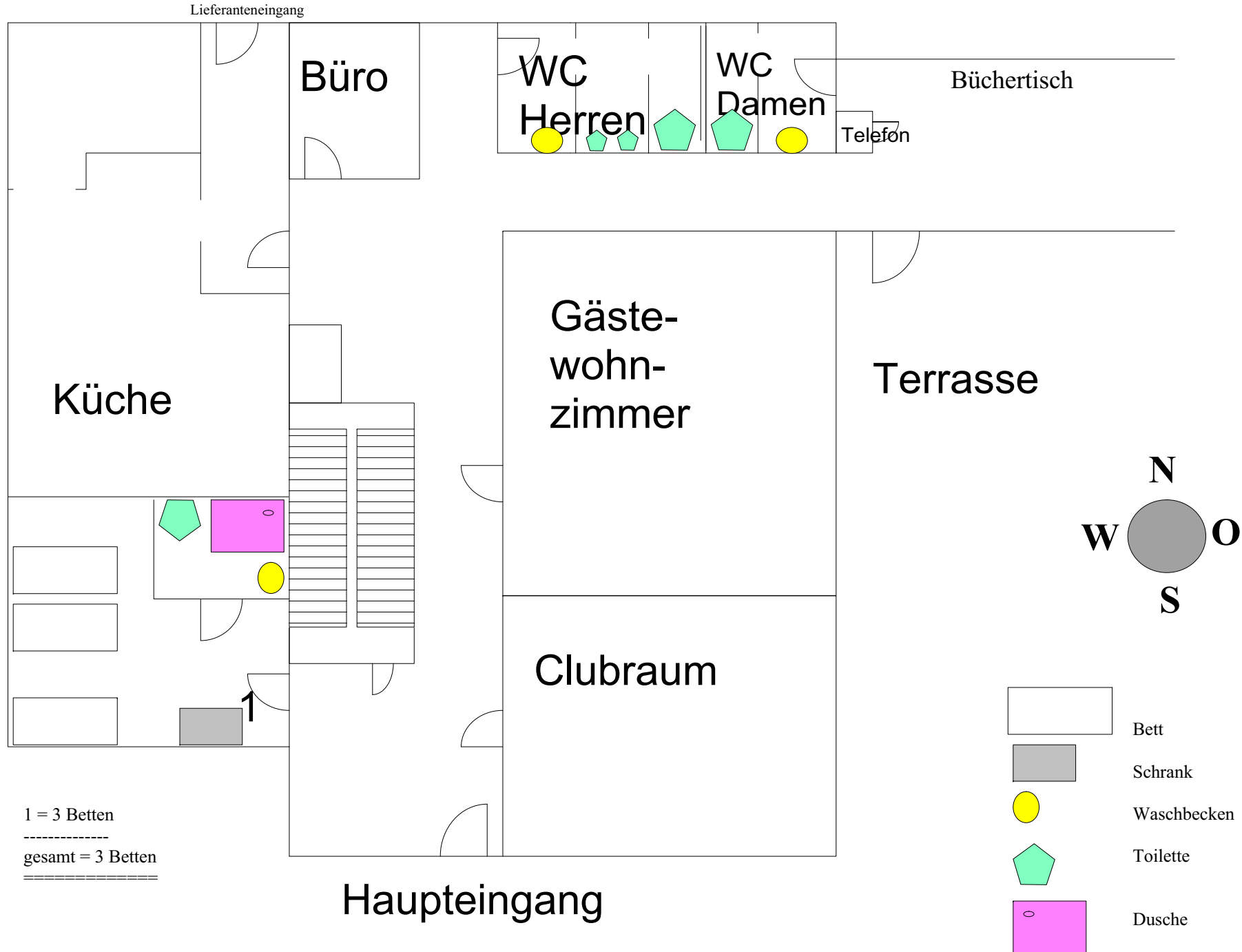
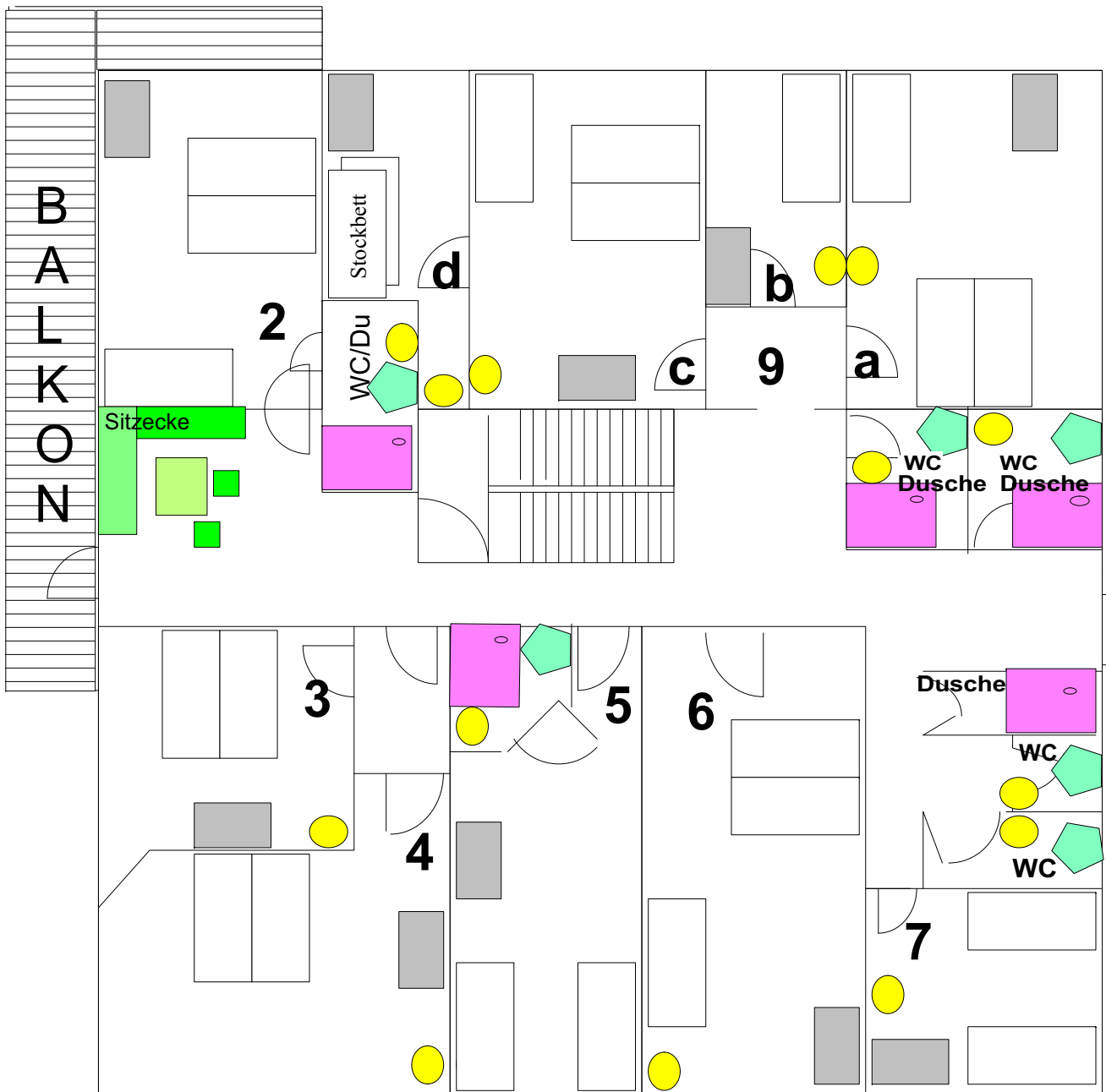


Forggensee

Altbau - EG

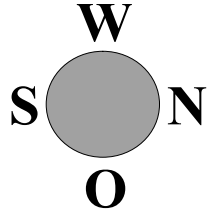




Forggensee

1.OG



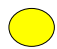


Altbau



Fluchttür

- 2 = 3 Betten
- 3 = 2 Betten
- 4 = 2 Betten
- 5 = 2 Betten
- 6 = 3 Betten
- 7 = 2 Betten
- 9a = 3 Betten
- 9b = 1 Bett
- 9c = 3 Betten
- 9d = 2 Betten (1 Stockbett)

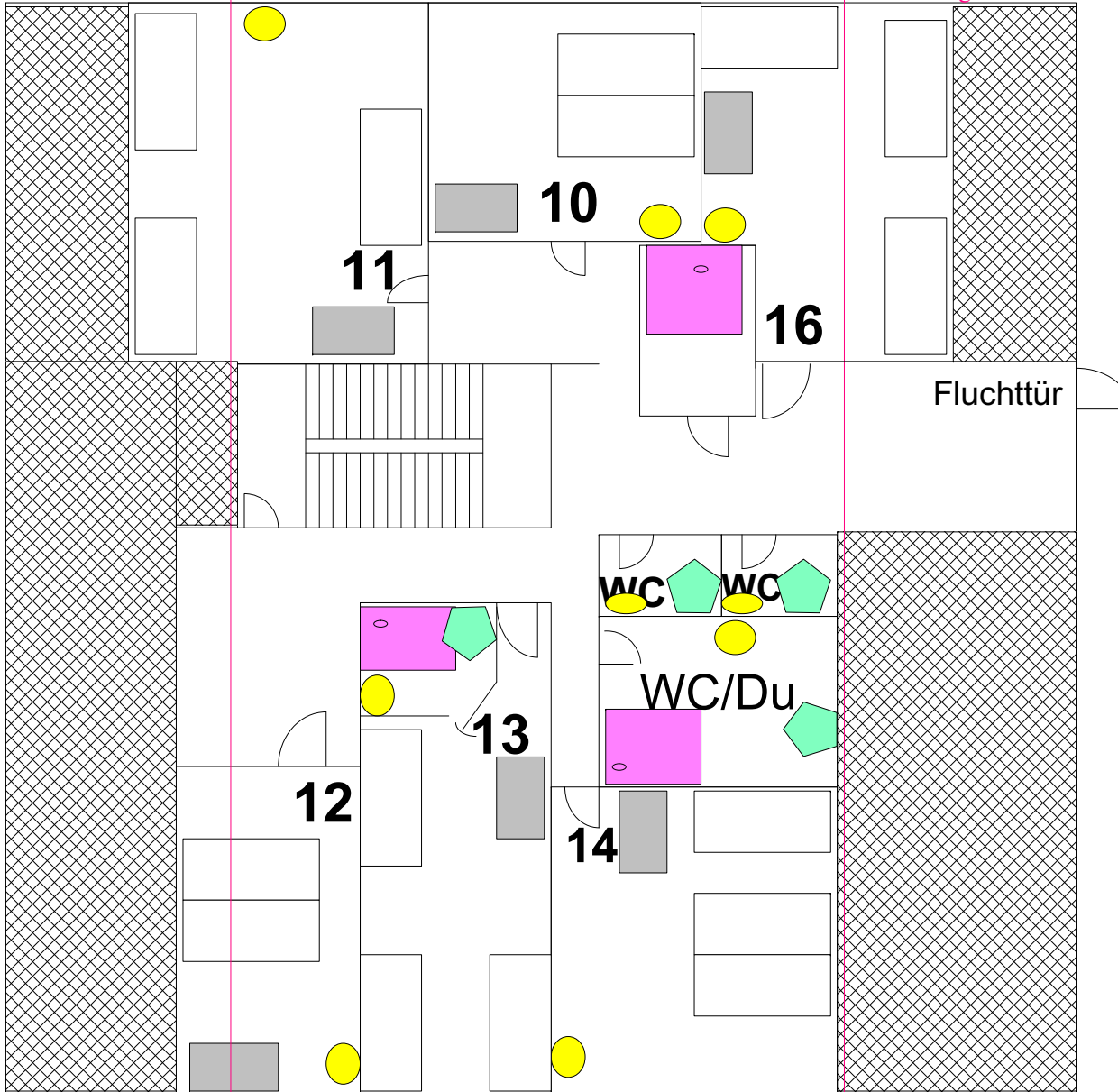
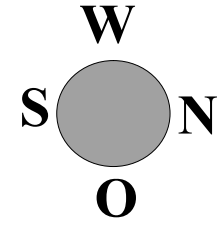
gesamt = 23 Betten

-  Bett
-  Schrank
-  Waschbecken
-  Toilette
-  Dusche

Forggensee Altbau 2. OG






Dachschräge / Balken

Dachschräge / Balken



- 10 = 2 Betten
- 11 = 3 Betten
- 12 = 2 Betten (nur für Kinder geeignet)
... sehr schräg ...
- 13 = 3 Betten
- 14 = 3 Betten
- 16 = 3 Betten

gesamt 16 Betten

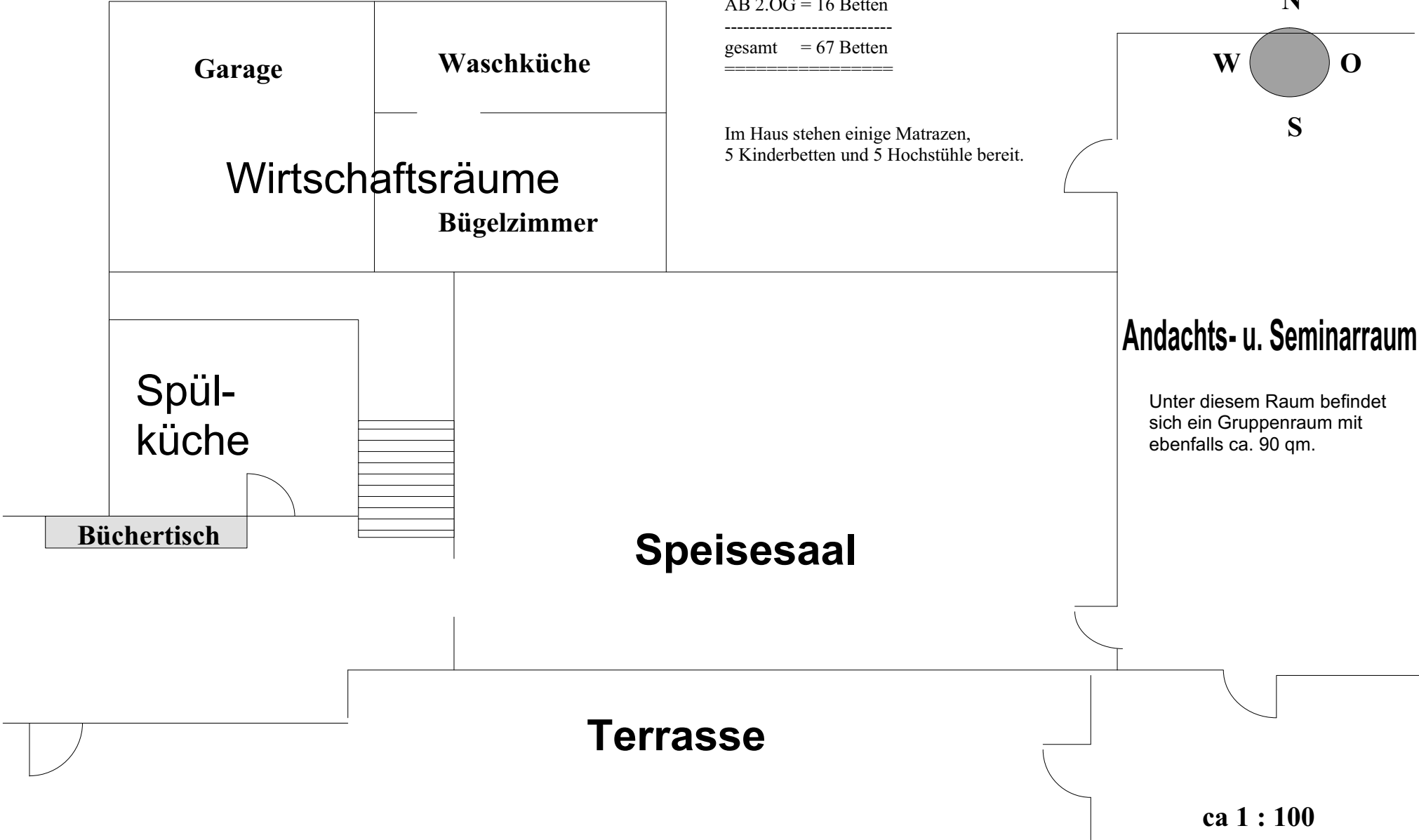
-  Bett
-  Schrank
-  Waschbecken
-  Toilette
-  Dusche

Forggensee Neubau EG

NB 1.OG = 25 Betten
AB Erdg. = 3 Betten
AB 1.OG = 23 Betten
AB 2.OG = 16 Betten

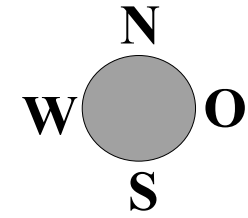
gesamt = 67 Betten

Im Haus stehen einige Matrasen,
5 Kinderbetten und 5 Hochstühle bereit.








ca 1 : 100

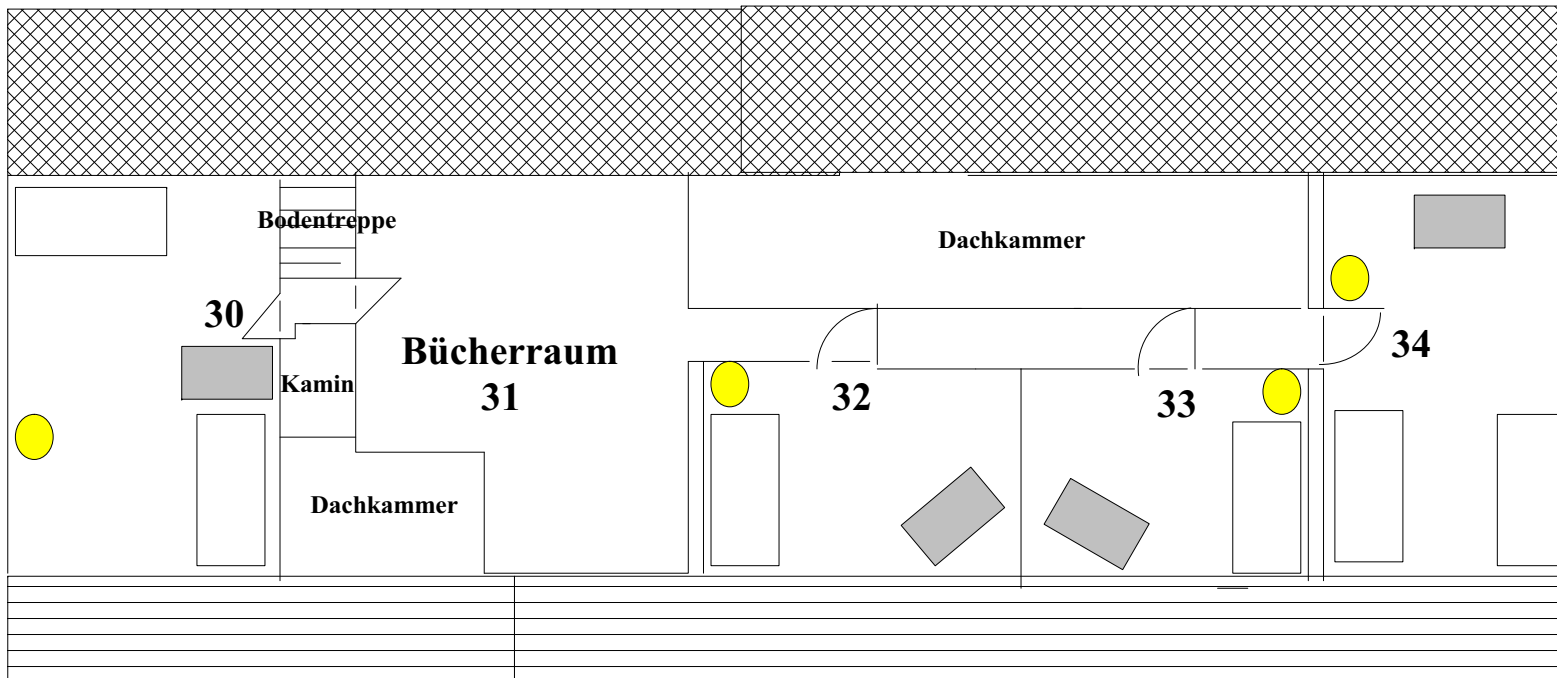
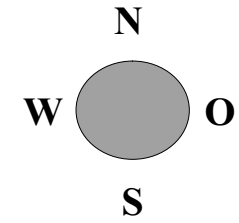
Forggensee Neubau 1. OG



- 17 = 4 Betten
 - 18 = 3 Betten
 - 19 = 3 Betten
 - 20 = 3 Betten
 - 21 = 4 Betten
 - 22 = 2 Betten
 - 23 = 2 Betten
 - 24 = 2 Betten
 - 25 = 2 Betten
-
- gesamt = 25 Betten
-

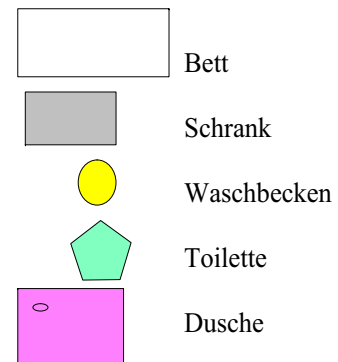
-  Bett
-  Schrank
-  Waschbecken
-  Toilette
-  Dusche

Forggensee Neubau 2. OG (Dachboden)



30 = 2 Betten
 32 = 1 Bett
 33 = 1 Bett
 34 = 2 Betten

 gesamt 6 Betten
 =====



ca 1 : 100

ZIMMERPLAN

Kinderbett
o. Matratze
möglich bei
Bedarf:

Zi.Nr.:	1.Bett	2.Bett	3.Bett	4.Bett	
Erdgeschoß :					
1				///incl.Du/Wc.//////////	
Altbau 1. Stock :					
2				/incl.Du/Wc.	
3			//////////		
4			//////////		
5			//////////	///incl.Du/Wc.//////////	
6				//////////	
7			//////////		
9a				//////////	
9b		//////////			
9c				//////////	
9d			///Stockbett//	Zi. nur über 9c erreichbar.	
Altbau 2. Stock :					
10			//////////	//////////	//////////
11				//////////	
12			///nur für Kinder geeignet	//////////	
13				///incl.Du/Wc.//////////	
14				//////////	
16				//////////	
Neubau 1. Stock :					
17					
18				//////////	
19				//////////	
20				//////////	
21				incl.Du/Wc.	
22			//////////		
23			//////////		
24			//////////		
25			//////////		

Dusche u. Wc's auf den Etagenfluren.
Im Haus befinden sich 7 Kinderbetten u. 7 Hochstühle.